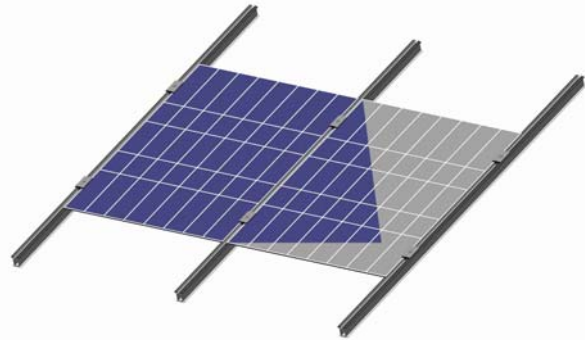


Plandach 5

Patent protection!



A really new system ...based upon well proven technology!

Schletter Plandach5[©] combines the advantages and the modularity of an on roof system with the features that you expect from a really good in roof system!

- **Best impermeability**
Best sealing technology by separation of sealing and module fastening level
- **Very high security**
Laminar sealing of the fastening points, well tried screws with seal washers, profile with inboard drainage
- **Best connection technology, best static features**
All connections are screwed
- **Separation of the liabilities**
- **Flexible and modular, useable for all module types and sizes**
- **Rear-ventilation guarantees best yields**
- **Shapely design**
- **High-quality materials**
- **Economically priced total system**

Conventional roofing sheets (e.g. Alwitra Evalon V) are laid onto the roof boarding (e.g. wood material plate V100 G or massive boarding plus fire prevention mats) or onto a correspondingly pressure-stable on roof insulation. On the roofing sheets the vertical system rails are screwed to the boarding; sheet the holes are sealed between rail and roofing (laminar sealing with shaped EPDM rubber parts). For additional security the screws inside the rails are equipped with sealing washers. Furthermore the rail has an inboard drainage system which keeps possible rest water from the screw holes. The system rails are arranged parallel to the modules (laminates or framed modules). The modules are fastened with clamps which can be fastened to the rails where required. On demand a linear clamping with a continuous cover rail is also possible. The system is suitable for roof angles from app. 20°.

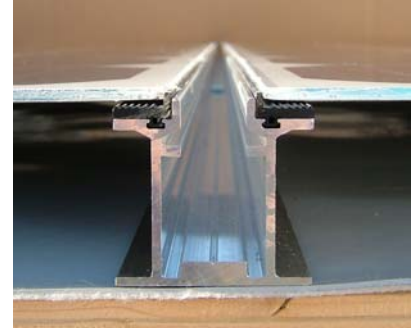
Zoom



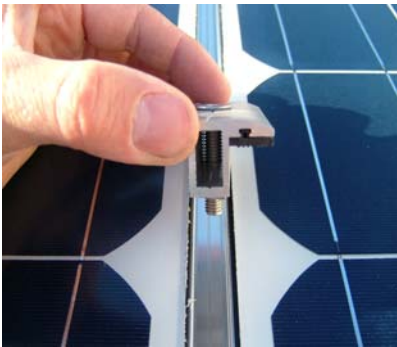
The vertical rails are screwed directly on the roof sheets in the right distances. Rubber band for laminar sealing of all screw connections.



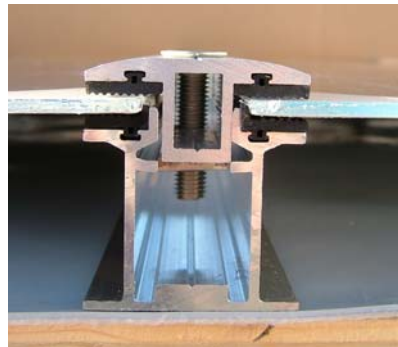
The rails are screwed with special screws equipped with sealing washers. Distances between the screws according to the static calculations.



Laying of the modules onto the vertical rails.



The module clamps can be fastened to the rails at any place.



Screwed module clamp. The modules only touch rubber parts.



General view

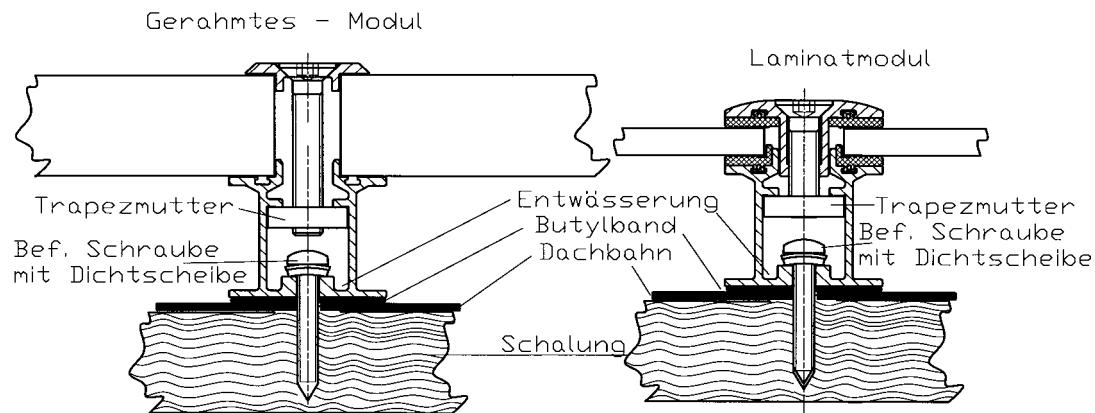


Clamping (laminare modules)
 Zoom



Clamping (framed modules)
 Zoom

System structure



Technical specifications

- Material**
- Clamp parts: aluminium, screws: high-grade steel
 - Rubber: UV resistant EPDM material
 - Roofing sheets, sealing band, etc. from the industry sector
- Modules**
- Framed modules of any thickness
 - Laminates from 3 to 14mm
 - Clamping range for laminate modules 11mm with small and 15mm with broad clamp top
- Statics**
- According to DIN 1055 new and Eurocode 1, specifications about the needed number of fastening screws.

Get all system prices fast and easily with our auto calculator!