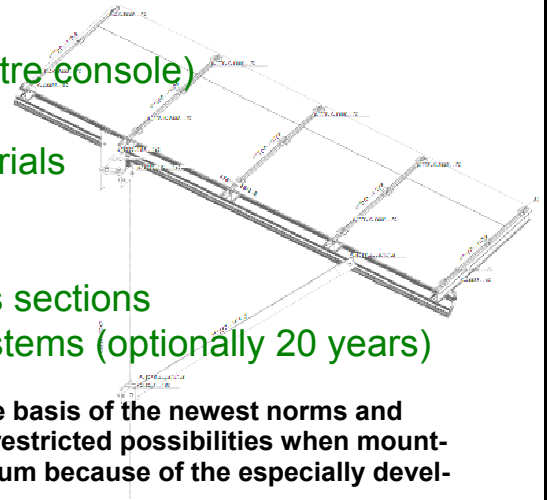


A systematic system!



- Perfectly coordinated system components
- Best accessibility for ground maintenance (centre console)
- No ground sealing
- Long life because of ideal combination of materials
- Extremely short mounting time
- Cost-effective
- Filigree look because of optimised profile cross sections
- 10 year guarantee – just as on all Schletter systems (optionally 20 years)



This absolutely new mounting system has been developed on the basis of the newest norms and scientific knowledge. The modular design offers you (almost) unrestricted possibilities when mounting any usual modules. The mounting time is reduced to a minimum because of the especially developed clamping connections.

As foundation a driven pile available in six different sizes is used. The cross section of this profile has been optimised regarding the static and dynamic stresses and strains. **This saves 50% of the material compared with rolled sections.**



The support unit is designed as a single support or also as a framework support depending on the size of the module table. It is erected on the foundation. Like this the light weight of aluminium and the high stiffness of steel are optimally combined. The two materials are hot-dip galvanised. The continuous profile has no additional joints that could lead to corrosion or extra expenses.

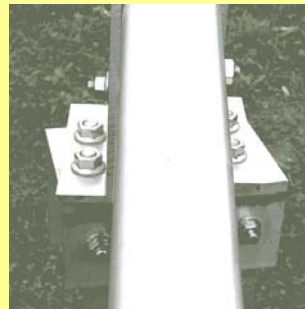


The crossbeams have been designed regarding the distribution of forces within the construction. Corresponding fastening grooves are integrated into all profiles to allow a simple and fast mounting. The crossbeams are fastened to the supports with special clamping connections. Of course our well-proved **click-system** is used on the crossbeams.

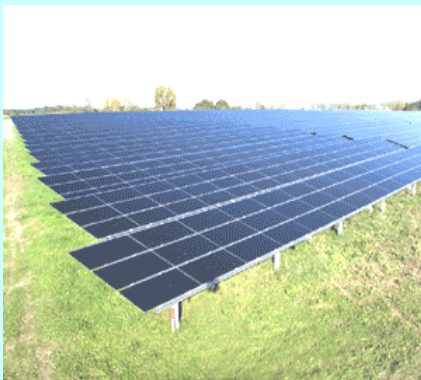


The mounting time is reduced to a minimum because of the small number of components. Furthermore triaxial adjustments from the top are possible. Specialized companies cost-effectively ram the consoles into the ground.

We would be happy to recommend appropriate companies to you.



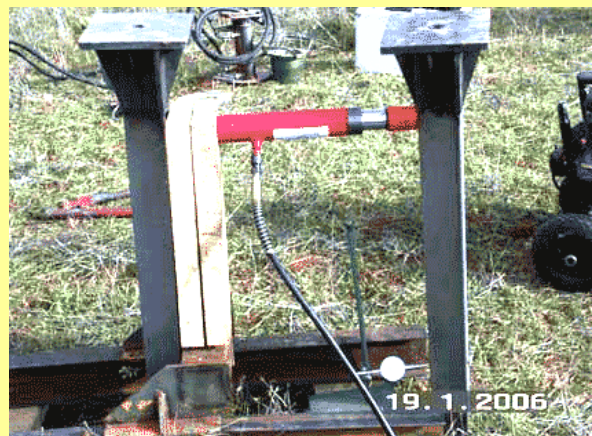
The field of application ranges from flat territory to steep slopes. Even additional erections on gently inclined slopes are no problem.



For the dimensioning an expert's report about the soil conditions is made. On the basis of this report the optimal ramming depth is calculated. This guarantees a maximum utilisation of cross-sections and material. Your modules have an expected life of more than 25-30 years. Your mounting system should outlast your modules!

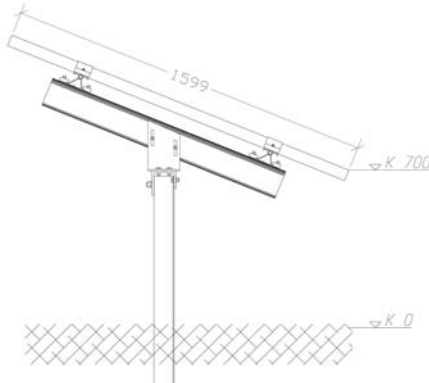

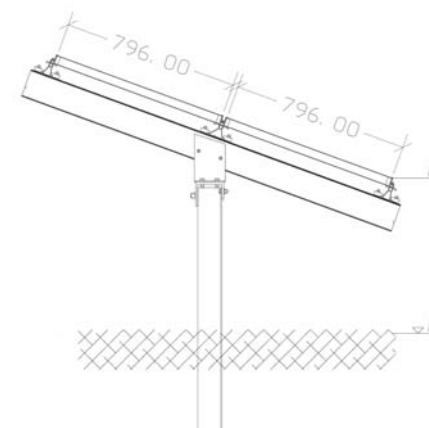
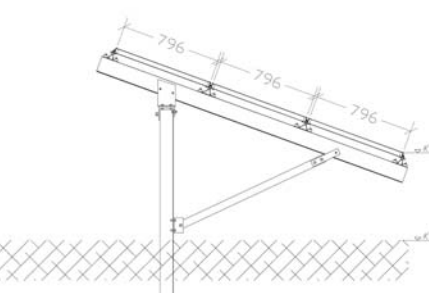


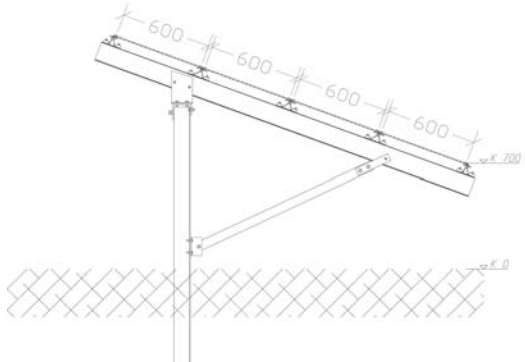
Vertical tension and compression test



Measuring of the horizontal deformation

Project examples

Drawing	Typical module measures	System	Brief description
	<p>e.g. 1600 x 800</p>	<p>FS1V</p>	<ul style="list-style-type: none"> - one module mounted vertically - clamping of the modules in the 1/5 points
	<p>e.g. 1600 x 800</p>	<p>FS2V</p>	<ul style="list-style-type: none"> - two modules mounted vertically - clamping of the modules in the 1/5 points
	<p>e.g. 1000 x 800</p>	<p>FS2H</p>	<ul style="list-style-type: none"> - two modules mounted horizontally - clamping of the modules in the 1/5 points - low installation height because of cross mounting - recommendable in case of a disadvantageous height to width ratio
	<p>e.g. 1000 x 800</p>	<p>FS3H</p>	<ul style="list-style-type: none"> - three modules mounted horizontally - clamping of the modules in the 1/5 points - low installation height because of cross mounting - recommendable in case of a disadvantageous height to width ratio

	<p>e.g. 600 x 1200</p>	<p>FS4H</p>	<ul style="list-style-type: none"> - four modules mounted horizontally - clamping of the modules in the 1/5 points - low installation height because of cross mounting
---	----------------------------	-------------	---

<p>Logistics</p>	<ul style="list-style-type: none"> • Mainly prefabricated component parts • Fast and easy mounting • Fast transfer on the building site 	
<p>Material</p>	<ul style="list-style-type: none"> • All-metal aluminium/VA steel frame with long life expectancy • Possibility of repowering • High residual value – no disposal costs when deconstructing 	
<p>Construction</p>	<ul style="list-style-type: none"> • Adjustable to compensate territory unevenness • Cost-optimised • Simple and inexpensive integration of lightning protection systems possible • For framed and unframed modules 	
<p>Planning of the supporting frame</p>	<ul style="list-style-type: none"> • Wind forces according to the newest scientific knowledge and technical regulations • Profile designs considering force distribution • Optimised joint details 	<p>DIN 1055 part 4 (edition 03/05) Eurocode 1</p>
<p>Maintenance after mounting</p>	<ul style="list-style-type: none"> • Sheep grazing is possible • Centre console allows best accessibility • Maintenance-free construction 	

Get all system prices fast and easily with our auto calculator!

